



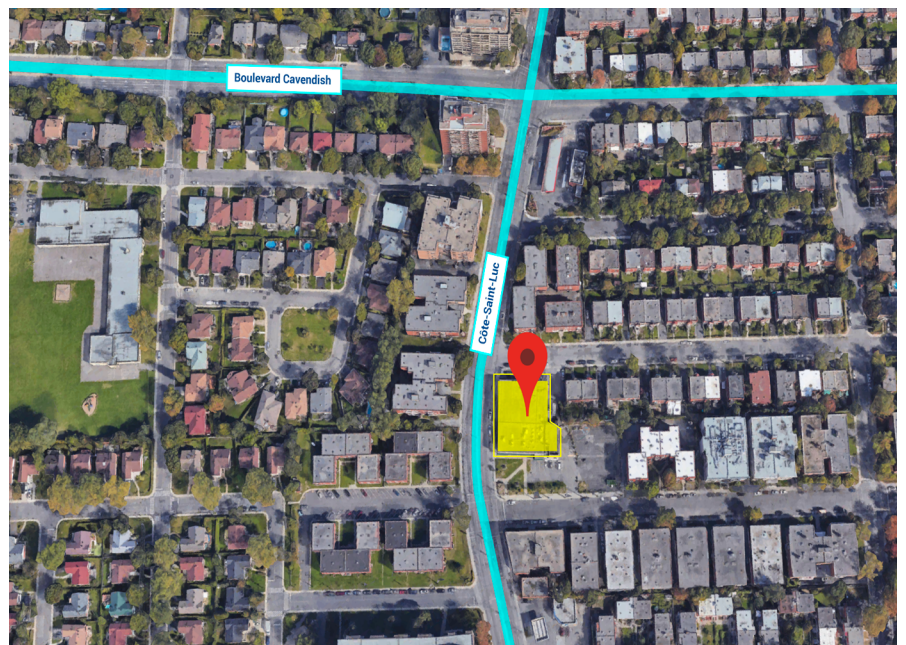
14,269 SLB/GLA

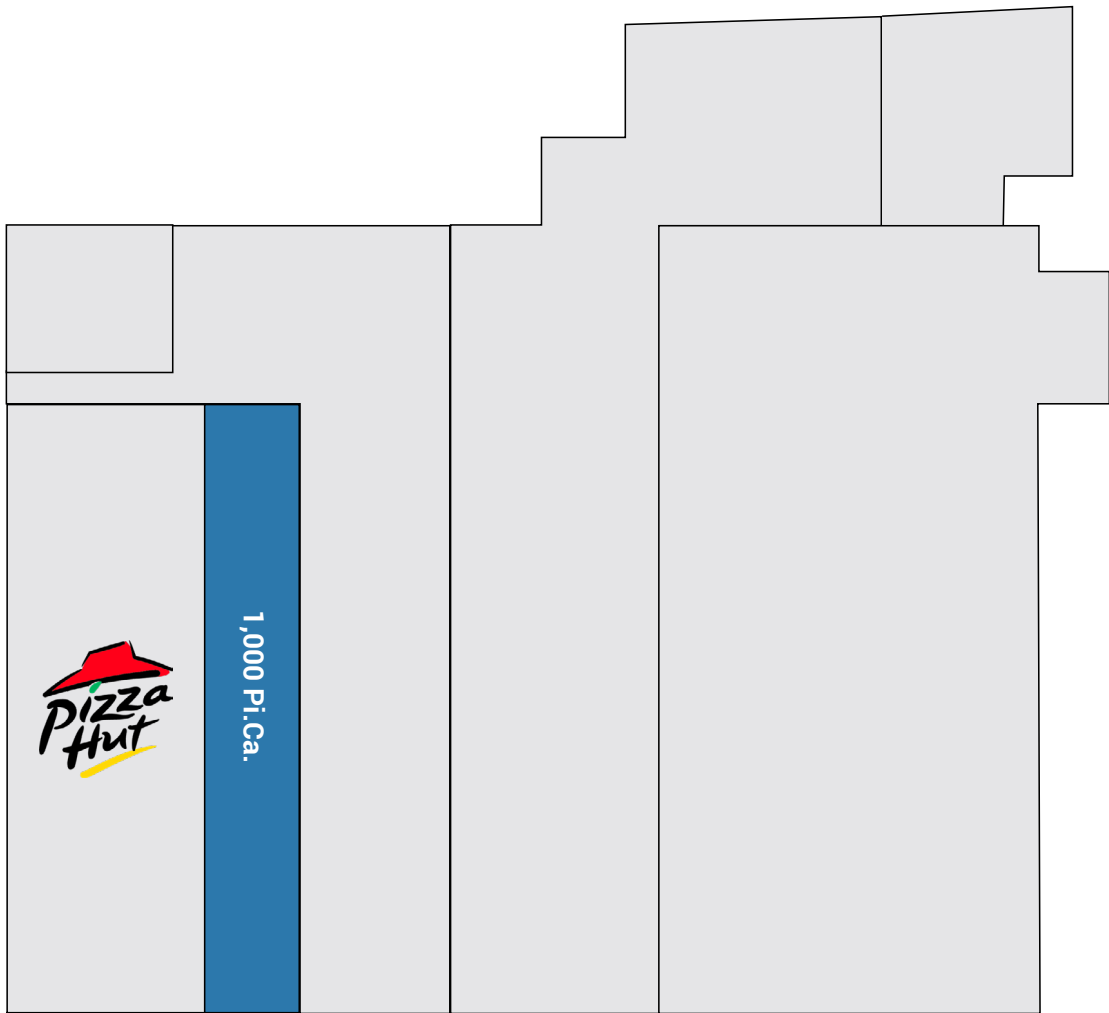
Particularites et caracteristiques

- POPULATION TOTA LE - RAYON DE 5 KM (PREVU POUR 2020) : 374 866
- REVENU FAMILIAL MOYEN: 77 905 \$
- CIRCULATION ROUTIERE (PAR VOLUME): 18 000-22 000 AUTOMOBILES
- ACCÈS PUBLIC : CIRCUIT D'AUTOBUS 103

Key Demographics

- TOTAL POPULATION WITHIN 5 KM RADIUS (PROJECTED FOR 2020): 281,732
- AVERAGE HOUSEHOLD INCOME: \$64,368
- TRAFFIC COUNT (BY VOLUME): 19,000 CARS
- PUBLIC ACCESS: BUS ROUTE 103





CHEMIN CÔTE-SAINT-LUC